

Rosefield Solar Farm

Chapter 17: Cumulative Effects

APFP Regulation Reg 5(2)(a)
Planning Act 2008
Infrastructure Planning
(Applications: Prescribed Forms
and Procedure) Regulations 2009
EN010158/APP/6.3.3
Revision 3
Deadline 2
April 2026
Rosefield Energyfarm Limited

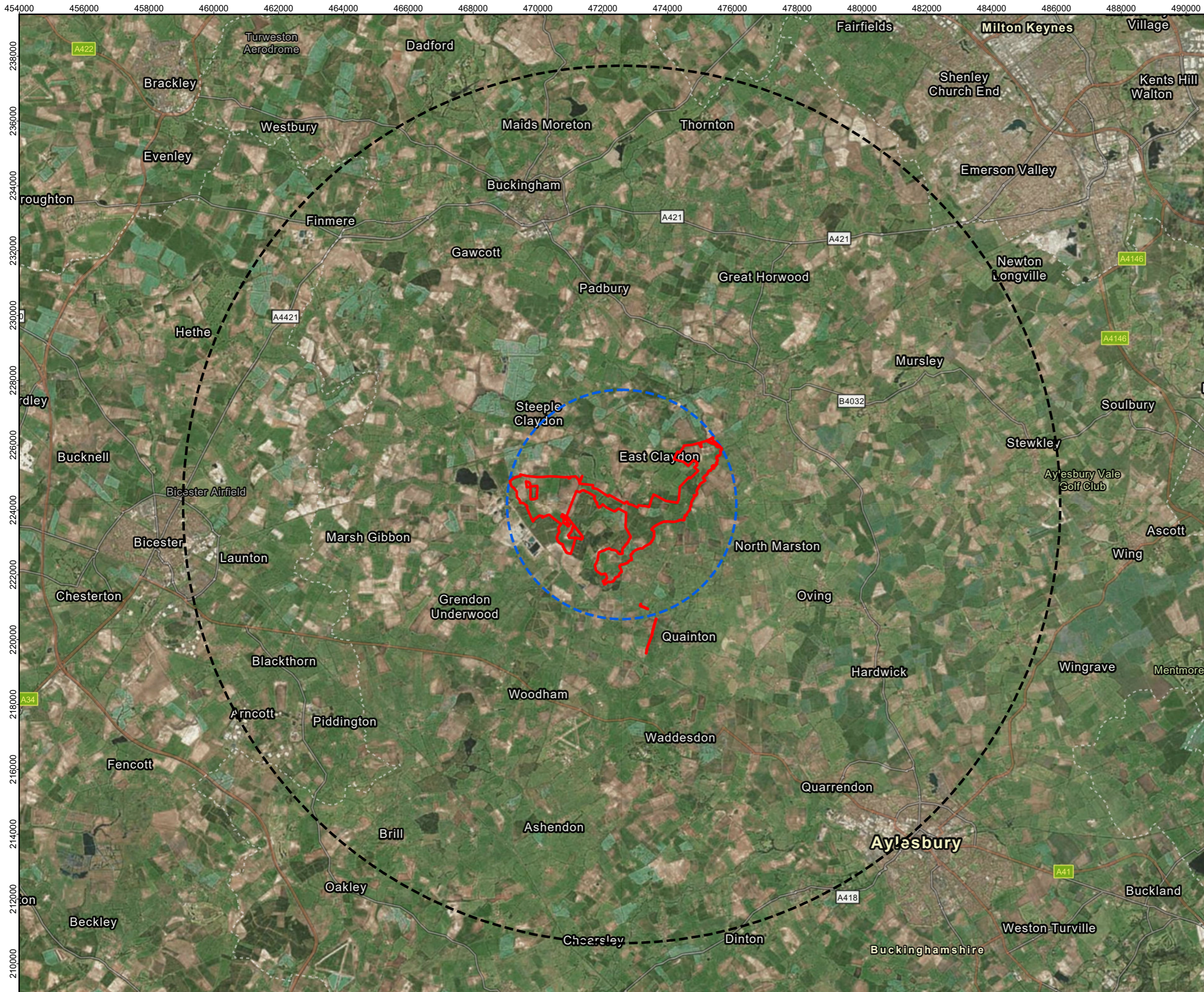


ES Volume 3: Figures

Chapter 17: Cumulative Effects

| Drawing number | Revision number | Drawing title | Scale | Reason for revision |
|----------------|-----------------|---|----------------|---------------------|
| 17.1 | 01 | Cumulative Zone of Influence | 1:110,000 @ A3 | No change required. |
| 17.2 | 02 | Cumulative Short List Radius | 1:100,000 @ A3 | No change required. |
| 17.3 a | 01 | Cumulative ZTV – National Grid East Claydon Substation Extension – Bare ground | 1:61,000 @ A3 | No change required. |
| 17.3 b | 01 | Cumulative ZTV – National Grid East Claydon Substation Extension – Screening | 1:61,000 @ A3 | No change required. |
| 17.4 a | 01 | Cumulative ZTV – East Claydon Greener Grid Park – Bare Ground | 1:61,000 @ A3 | No change required. |
| 17.4 b | 01 | Cumulative ZTV – East Claydon Greener Grid Park – Screening | 1:61,000 @ A3 | No change required. |
| 17.5 a | 01 | Cumulative ZTV – Tuckey Solar Farm – Bare Ground | 1:61,000 @ A3 | No change required. |
| 17.5 b | 01 | Cumulative ZTV – Tuckey Solar Farm – Screening | 1:61,000 @ A3 | No change required. |
| 17.6 a | 01 | Cumulative ZTV – Longbreach Solar Farm – Bare Ground | 1:61,000 @ A3 | No change required. |
| 17.6 b | 01 | Cumulative ZTV – Longbreach Solar Farm – Screening | 1:61,000 @ A3 | No change required. |
| 17.7 a | 01 | Cumulative ZTV – East Claydon BESS – Bare Ground | 1:61,000 @ A3 | No change required. |
| 17.7 b | 01 | Cumulative ZTV – East Claydon BESS – Screening | 1:61,000 @ A3 | No change required. |

| | | | | |
|---------------|----|---|---------------|---|
| 17.8 a | 02 | Cumulative ZTV – Rosefield and Littleton Manor Farm – Bare Ground | 1:61,000 @ A3 | No change required. |
| 17.8 b | 02 | Cumulative ZTV – Rosefield and Littleton Manor Farm - Screening | 1:61,000 @ A3 | No change required. |
| 17.9 a | 02 | Cumulative ZTV – All Cumulative Sites – Bare Ground | 1:61,000 @ A3 | No change required. |
| 17.9 b | 02 | Cumulative ZTV – All Cumulative Sites – Screening | 1:61,000 @ A3 | No change required. |
| 17.10 | 01 | Residential properties within 250m of the Order Limits excluding Finmerehill House, Dry Leys Farmhouse and Muxwell Farm | 1:28,000 @ A3 | New figure request by the ExA as part of the Examining Authority’s First Written Questions. |



LEGEND:

- Order Limits
- Bounding Circle
- Zone of Influence

Coordinate System: British National Grid
 Projection: Transverse Mercator
 Datum: OSGB 1936
 Units: Meter



| Rev | Date | Description | Drn | Chk | App |
|-----|-----------|----------------|-----|-----|-----|
| 01 | Sept 2025 | DCO SUBMISSION | RSK | RSK | EDF |

Rosefield Solar Farm

DOCUMENT:
 ENVIRONMENTAL STATEMENT, VOLUME 3:
 FIGURES, REGULATION 5(2)(a)

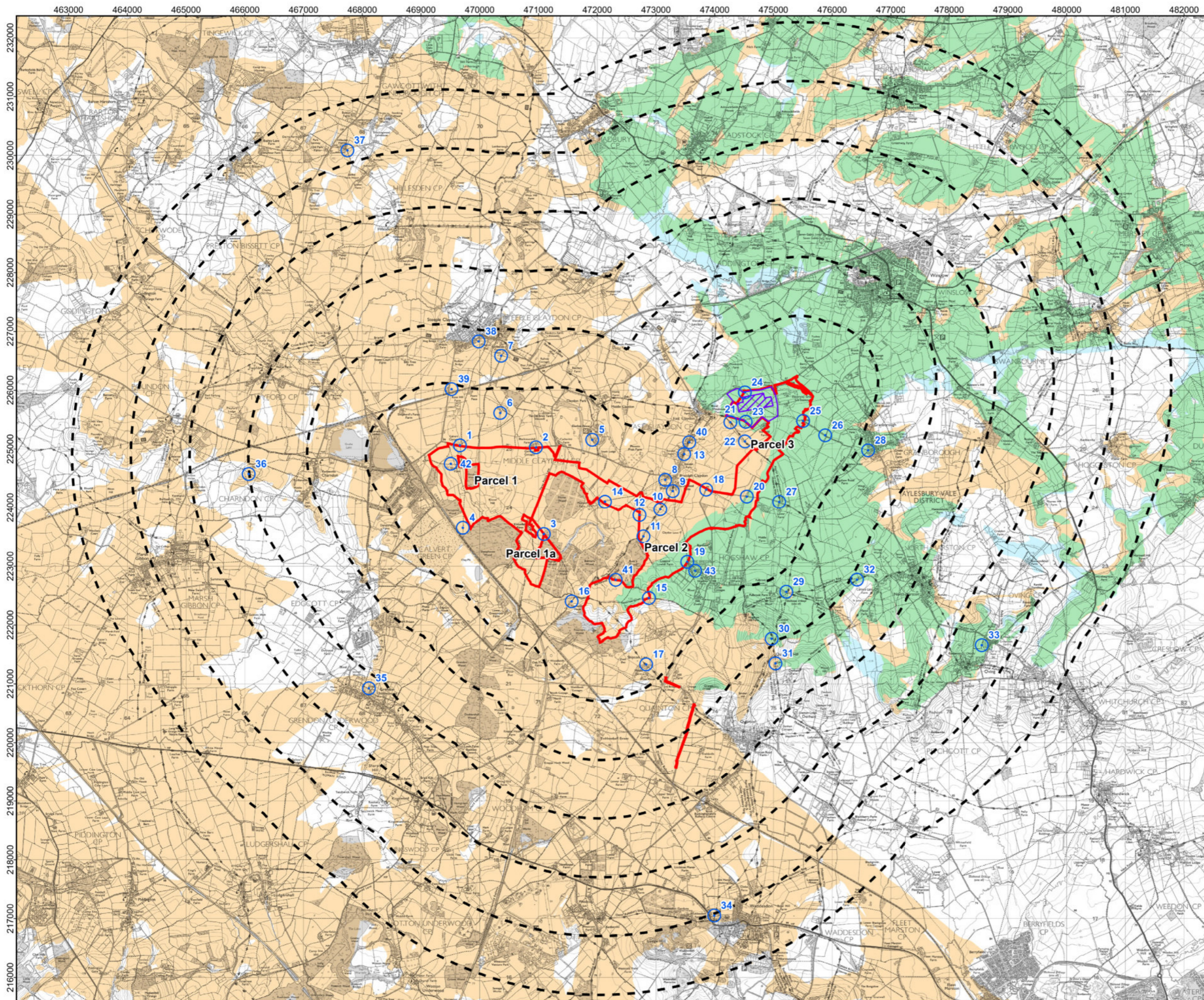
TITLE:
 FIGURE 17.1
 CUMULATIVE ZONE OF INFLUENCE

PINS REFERENCE NUMBER:
 EN010158/APP/6.3

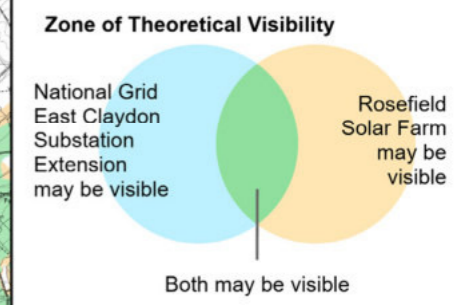
Kilometers

Scale: 1:110,000 @ A3

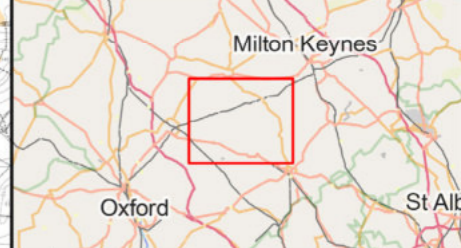
REV 01



- LEGEND:**
- Order Limits
 - Distance Radii from All Proposed Built Development (1-6km)
 - Viewpoints
 - National Grid East Claydon Substation Extension - Development Area
 - National Grid East Claydon Substation Extension - Site Boundary



Coordinate System: British National Grid
 Projection: Transverse Mercator
 Datum: OSGB 1936
 Units: Meter



| Rev | Date | Description | Drn | Chk | App |
|-----|-----------|----------------|-----|-----|-----|
| 01 | SEPT 2025 | DCO SUBMISSION | MP | DL | JL |
| 00 | APR 2025 | First Draft | MP | DL | JL |

Rosefield Solar Farm

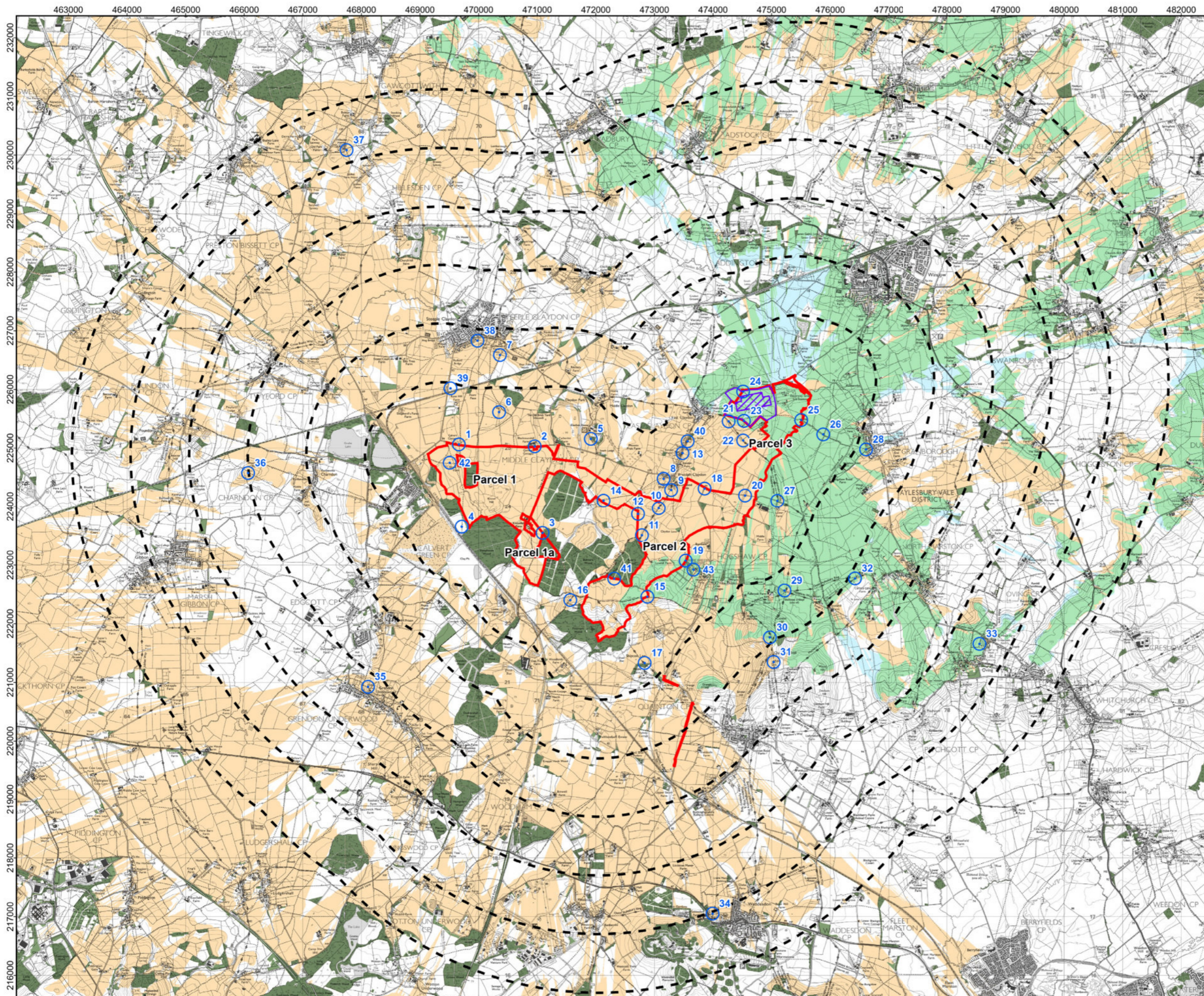
DOCUMENT:
 ENVIRONMENTAL STATEMENT
 VOLUME 3: FIGURES
 REGULATION 5(2)(a)

TITLE:
 FIGURE 17.3a
 CUMULATIVE ZTV - NATIONAL GRID EAST CLAYDON SUBSTATION EXT. - BARE EARTH

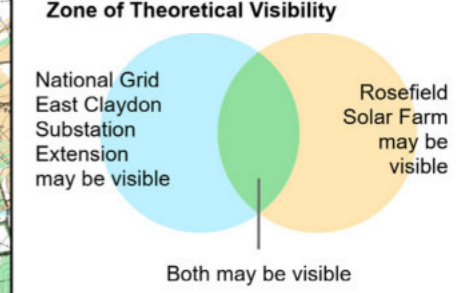
PINS REFERENCE NUMBER:
 EN010158/APP/6.3

Scale: 1:61,000 @ A3

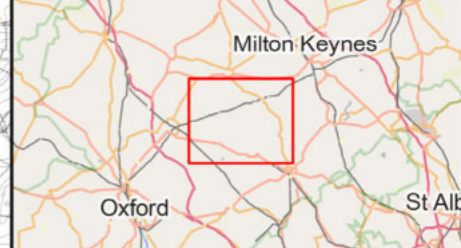
REV 01



- LEGEND:**
- Order Limits
 - Distance Radii from All Proposed Built Development (1-6km)
 - Viewpoints
 - Woodland (modelled at 10m)
 - Buildings (modelled at 6m)
 - National Grid East Claydon Substation Extension - Development Area
 - National Grid East Claydon Substation Extension - Site Boundary



Coordinate System: British National Grid
 Projection: Transverse Mercator
 Datum: OSGB 1936
 Units: Meter



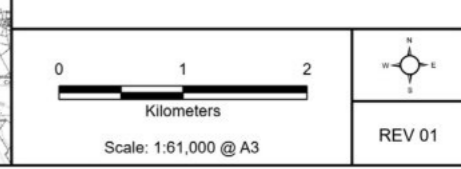
| Rev | Date | Description | Drn | Chk | App |
|-----|-----------|----------------|-----|-----|-----|
| 01 | SEPT 2025 | DCO SUBMISSION | MP | DL | JL |
| 00 | APR 2025 | First Draft | MP | DL | JL |

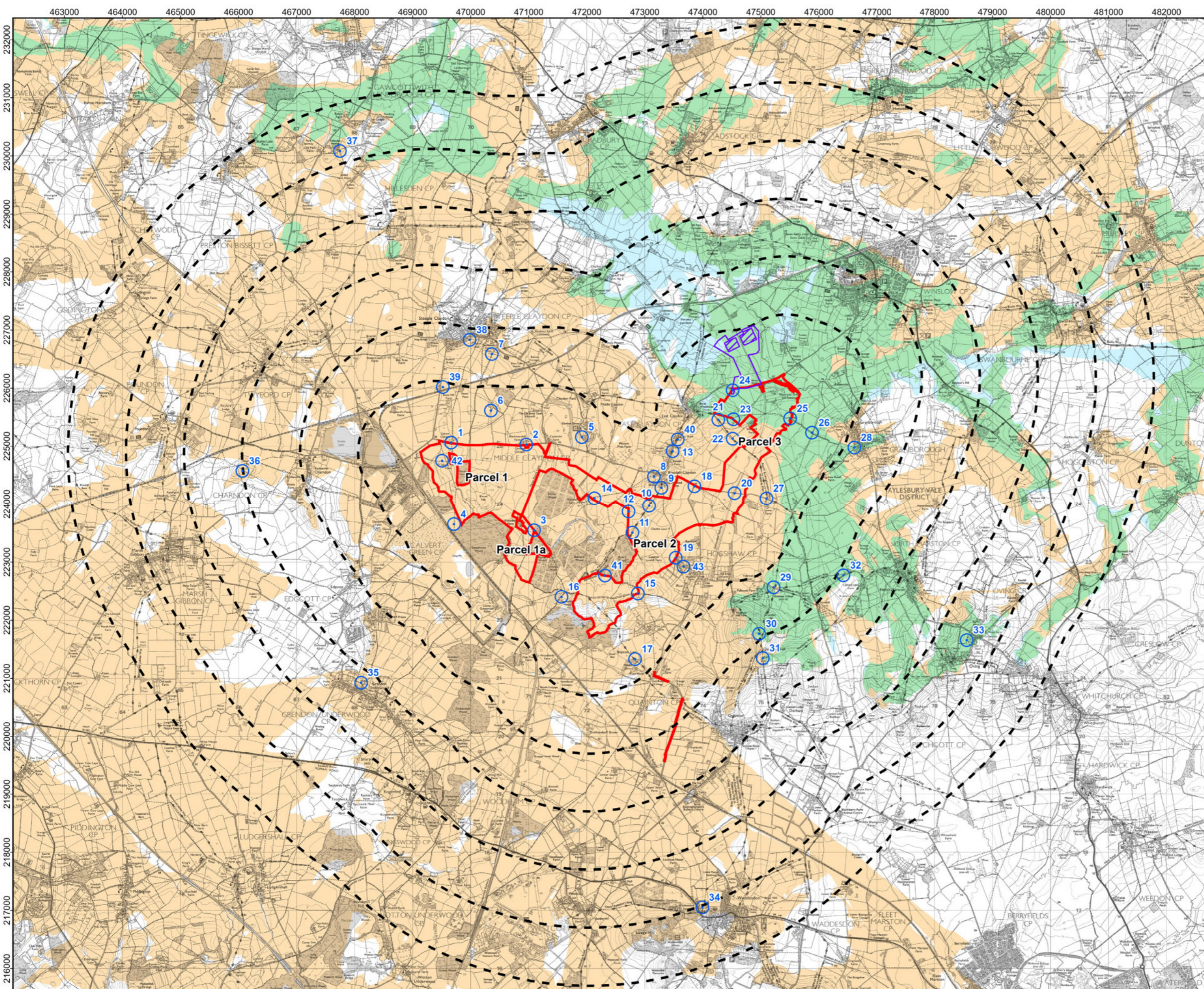
Rosefield Solar Farm

DOCUMENT:
 ENVIRONMENTAL STATEMENT
 VOLUME 3: FIGURES
 REGULATION 5(2)(a)

TITLE:
 FIGURE 17.3b
 CUMULATIVE ZTV - NATIONAL GRID EAST CLAYDON SUBSTATION EXT. - SCREENING

PINS REFERENCE NUMBER:
 EN010158/APP/6.3





LEGEND:

- Order Limits
- Distance Radii from All Proposed Built Development (1-6km)
- Viewpoints
- East Claydon Greener Grid Park - Site Boundary
- East Claydon Greener Grid Park - Development Area

Zone of Theoretical Visibility

East Claydon Greener Grid Park may be visible

Rosefield Solar Farm may be visible

Both may be visible

Coordinate System: British National Grid
 Projection: Transverse Mercator
 Datum: OSGB 1936
 Units: Meter



| Rev | Date | Description | Drn | Chk | App |
|-----|-----------|----------------|-----|-----|-----|
| 01 | SEPT 2025 | DCO SUBMISSION | MP | DL | JL |
| 00 | SEP 2025 | First Draft | MP | DL | JL |

Rosefield Solar Farm

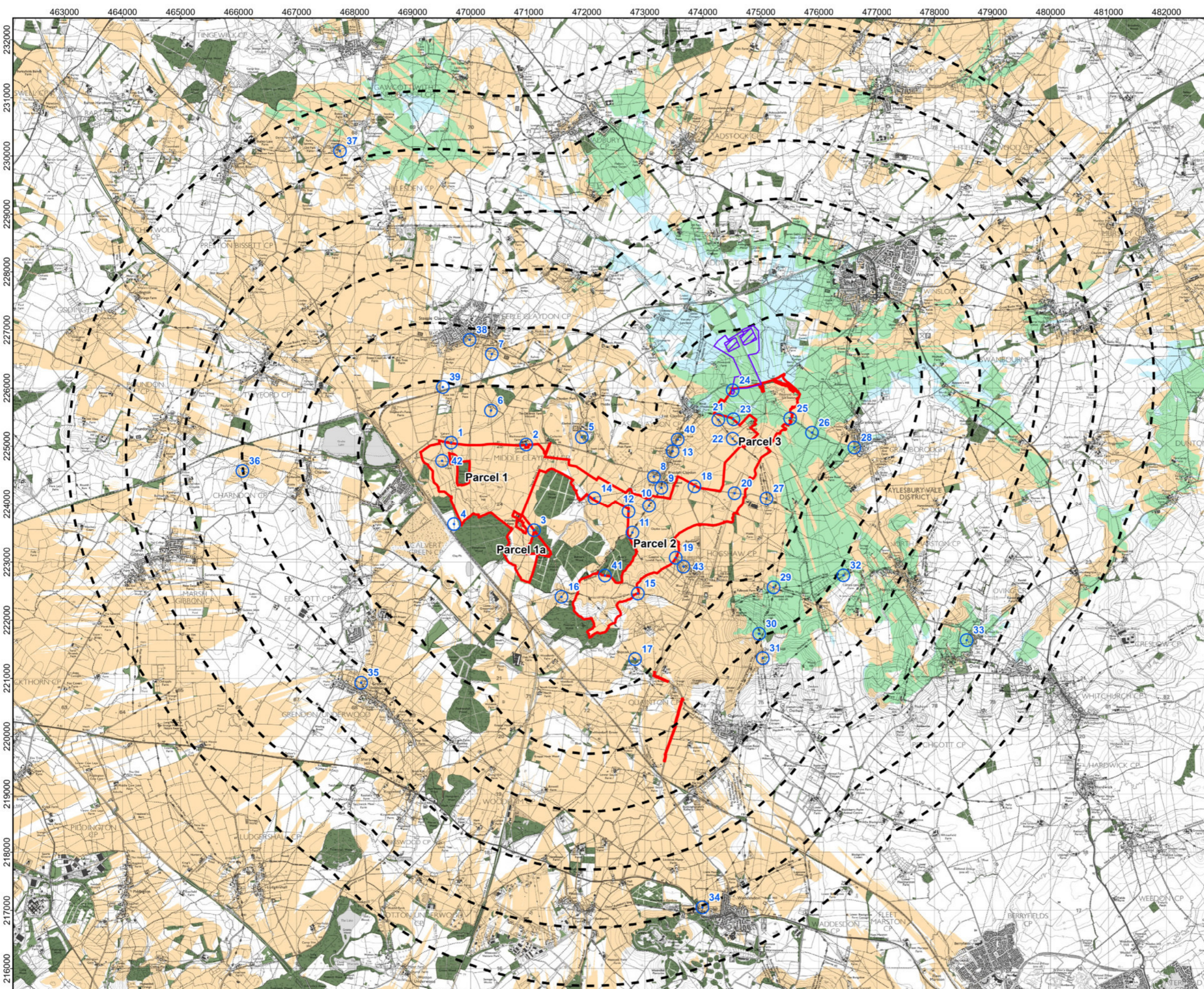
DOCUMENT:
 ENVIRONMENTAL STATEMENT
 VOLUME 3: FIGURES
 REGULATION 5(2)(a)

TITLE:
 FIGURE 17.4a
 CUMULATIVE ZTV - EAST CLAYDON GREENER
 GRID PARK - BARE EARTH

PINS REFERENCE NUMBER:
 EN010158/APP/6.3

Scale: 1:61,000 @ A3

REV 01



LEGEND:

- Order Limits
- Distance Radii from All Proposed Built Development (1-6km)
- Viewpoints
- Woodland (modelled at 10m)
- Buildings (modelled at 6m)
- East Claydon Greener Grid Park - Site Boundary
- East Claydon Greener Grid Park - Development Area

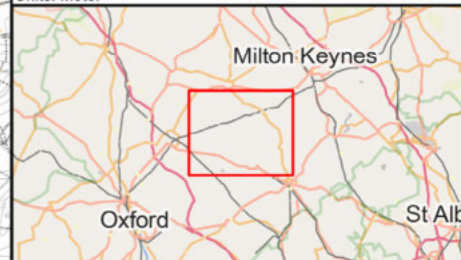
Zone of Theoretical Visibility

East Claydon Greener Grid Park may be visible

Rosefield Solar Farm may be visible

Both may be visible

Coordinate System: British National Grid
 Projection: Transverse Mercator
 Datum: OSGB 1936
 Units: Meter



| Rev | Date | Description | Drn | Chk | App |
|-----|-----------|----------------|-----|-----|-----|
| 01 | SEPT 2025 | DCO SUBMISSION | MP | DL | JL |
| 00 | APR 2025 | First Draft | MP | DL | JL |

Rosefield Solar Farm

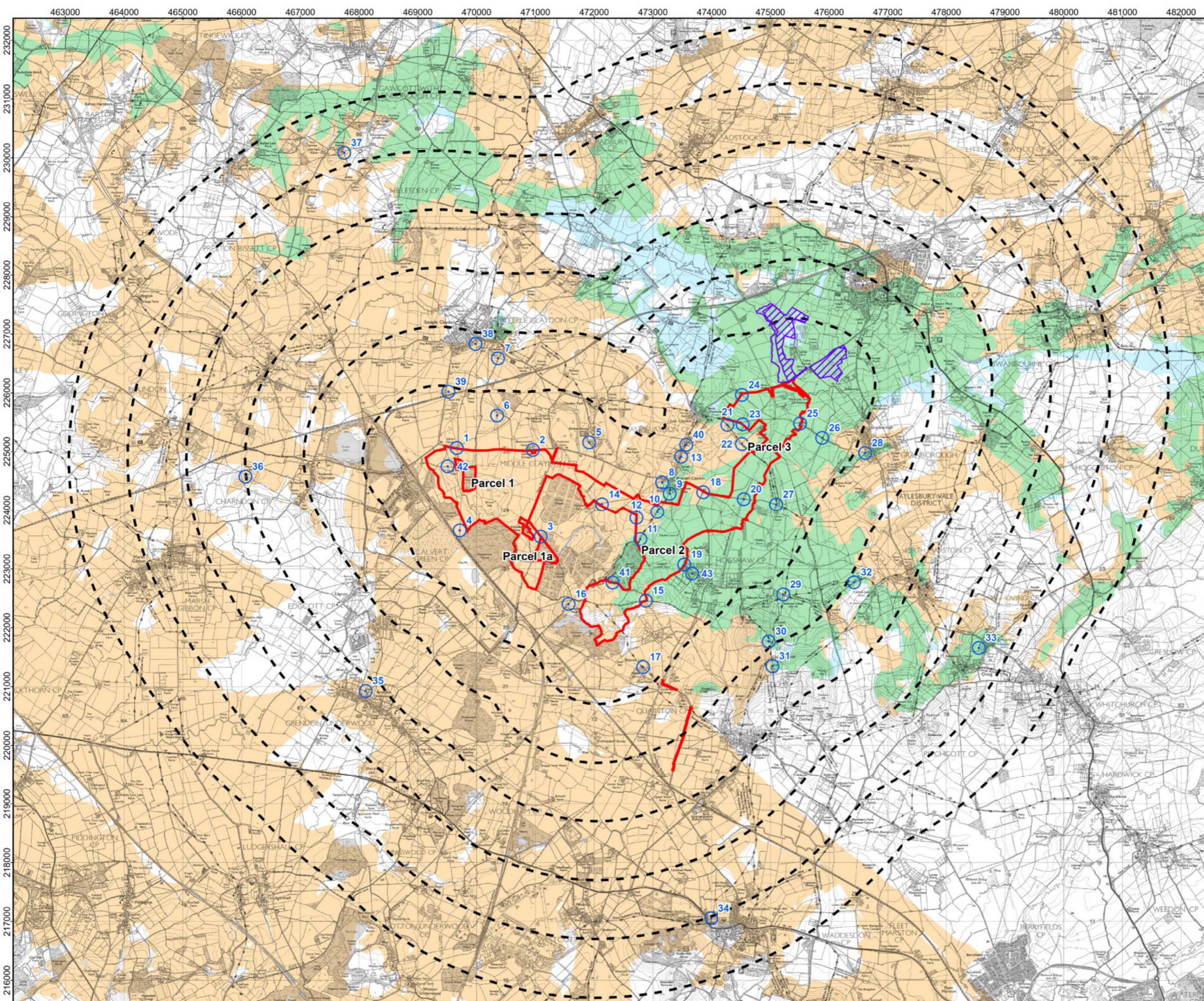
DOCUMENT:
 ENVIRONMENTAL STATEMENT
 VOLUME 3: FIGURES
 REGULATION 5(2)(a)

TITLE:
 FIGURE 17.4b
 CUMULATIVE ZTV - EAST CLAYDON GREENER
 GRID PARK - SCREENING

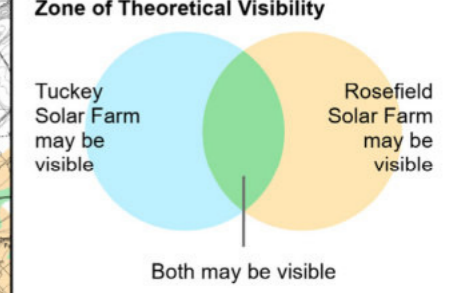
PINS REFERENCE NUMBER:
 EN010158/APP/6.3

Scale: 1:61,000 @ A3

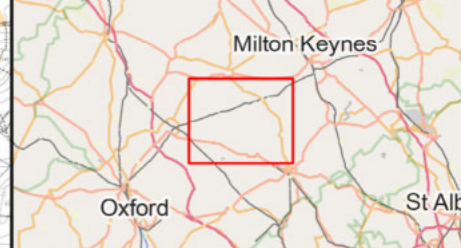
REV 01



- LEGEND:**
- Order Limits
 - Distance Radii from All Proposed Built Development (1-6km)
 - Viewpoints
 - Tuckey Solar Farm - Site Boundary
 - Tuckey Solar Farm - Development Area



Coordinate System: British National Grid
 Projection: Transverse Mercator
 Datum: OSGB 1936
 Units: Meter



| Rev | Date | Description | Drn | Chk | App |
|-----|-----------|----------------|-----|-----|-----|
| 01 | SEPT 2025 | DCO SUBMISSION | MP | DL | JL |
| 00 | APR 2025 | First Draft | MP | DL | JL |

Rosefield Solar Farm

DOCUMENT:
 ENVIRONMENTAL STATEMENT
 VOLUME 3: FIGURES
 REGULATION 5(2)(a)

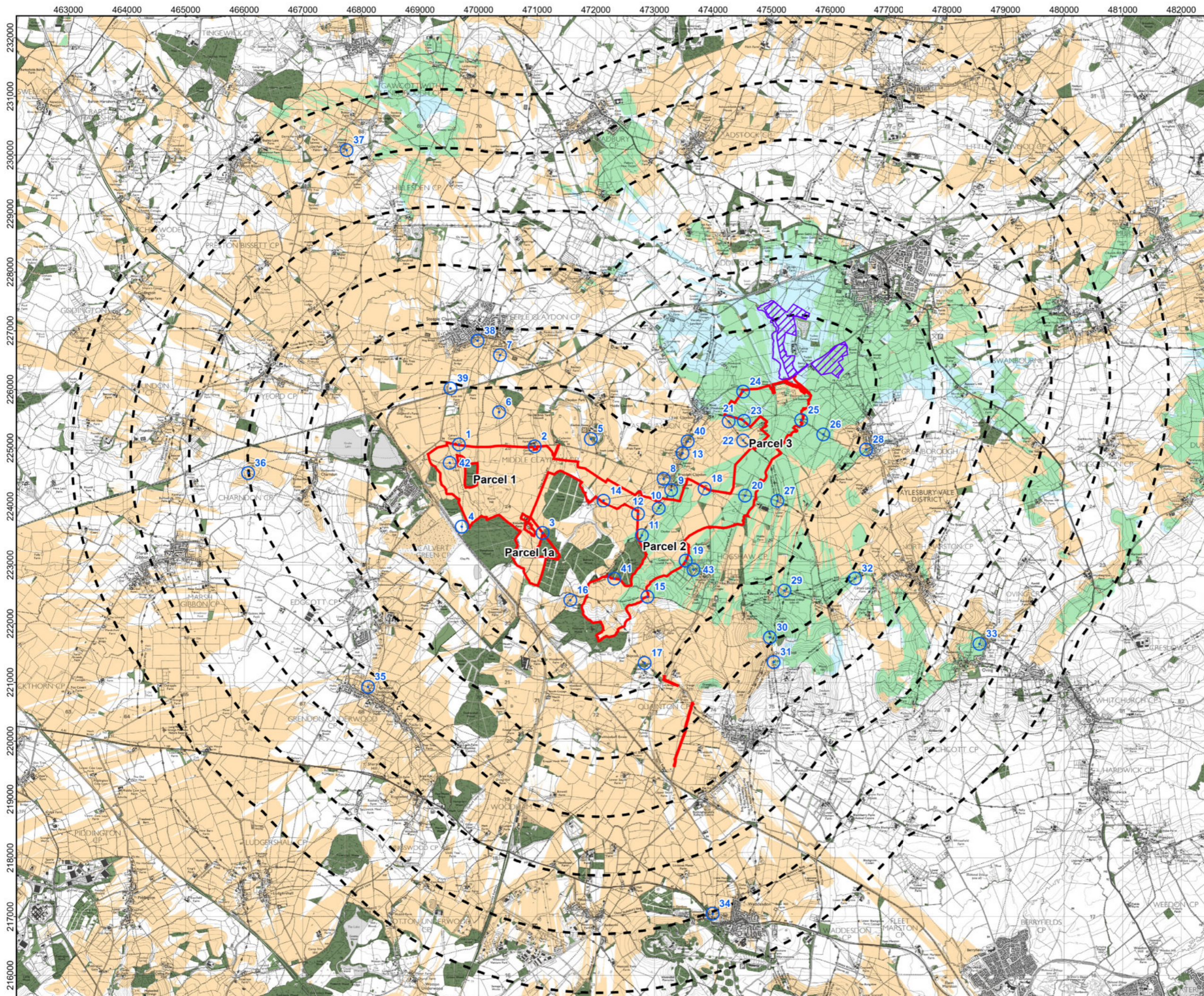
TITLE:
 FIGURE 17.5a
 CUMULATIVE ZTV - TUCKEY SOLAR FARM - BARE EARTH

PINS REFERENCE NUMBER:
 EN010158/APP/6.3

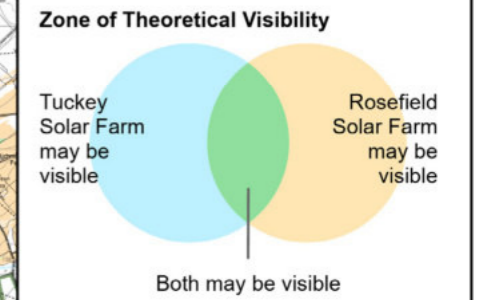
Kilometers

Scale: 1:61,000 @ A3

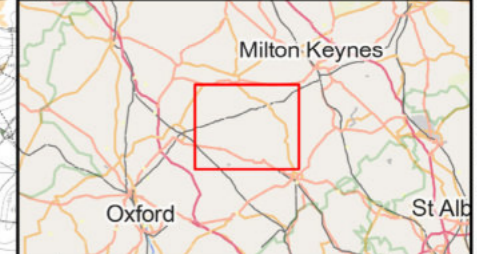
REV 01



- LEGEND:**
- Order Limits
 - Distance Radii from All Proposed Built Development (1-6km)
 - Viewpoints
 - Woodland (modelled at 10m)
 - Buildings (modelled at 6m)
 - Tuckey Solar Farm - Site Boundary
 - Tuckey Solar Farm - Development Area



Coordinate System: British National Grid
 Projection: Transverse Mercator
 Datum: OSGB 1936
 Units: Meter



| Rev | Date | Description | Drn | Chk | App |
|-----|-----------|----------------|-----|-----|-----|
| 01 | SEPT 2025 | DCO SUBMISSION | MP | DL | JL |
| 00 | APR 2025 | First Draft | MP | DL | JL |

Rosefield Solar Farm

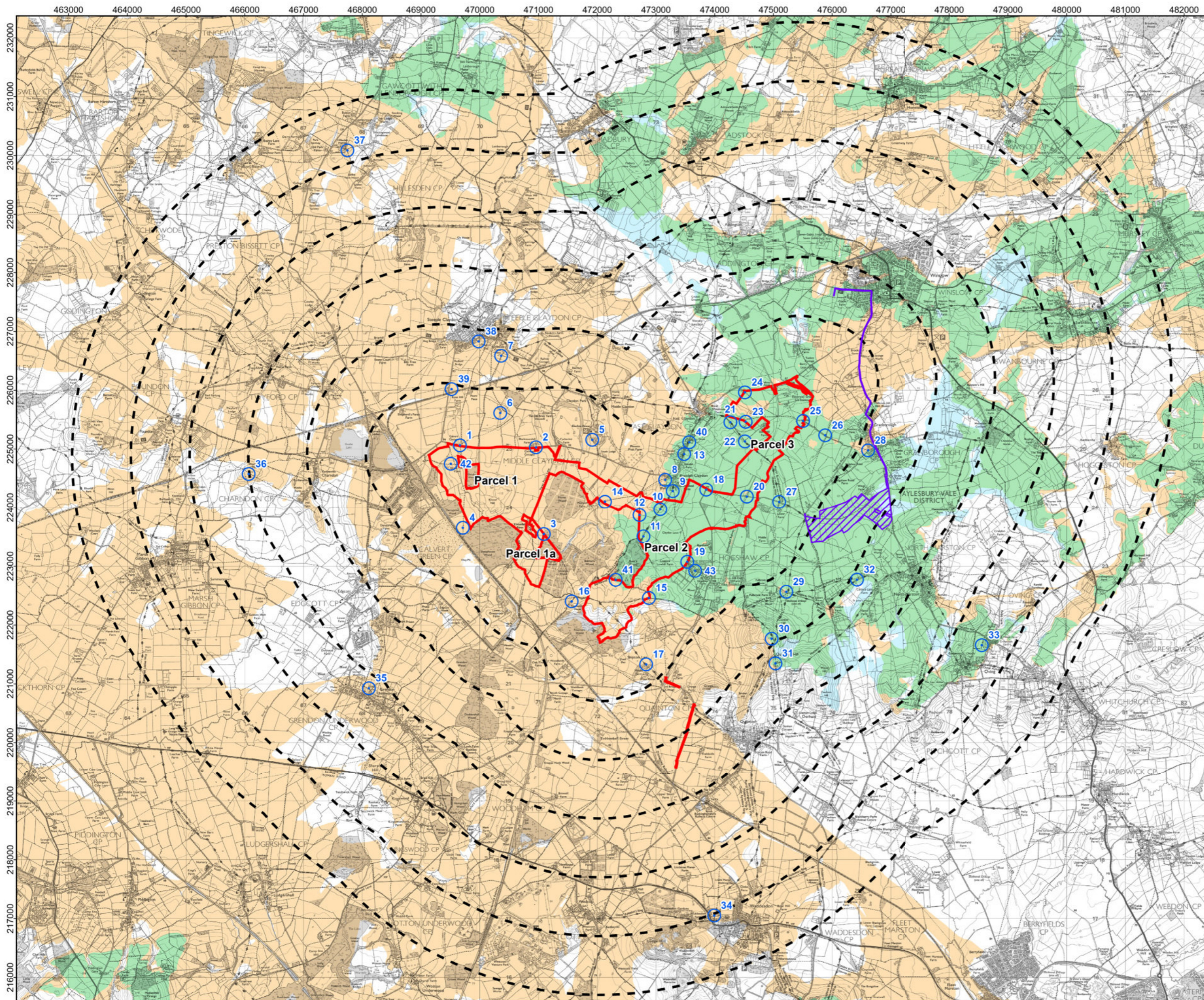
DOCUMENT:
 ENVIRONMENTAL STATEMENT
 VOLUME 3: FIGURES
 REGULATION 5(2)(a)

TITLE:
 FIGURE 17.5b
 CUMULATIVE ZTV - TUCKEY SOLAR FARM -
 SCREENING

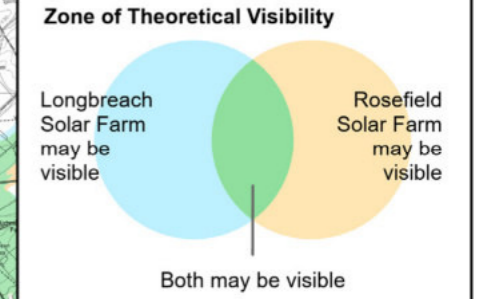
PINS REFERENCE NUMBER:
 EN010158/APP/6.3

Scale: 1:61,000 @ A3

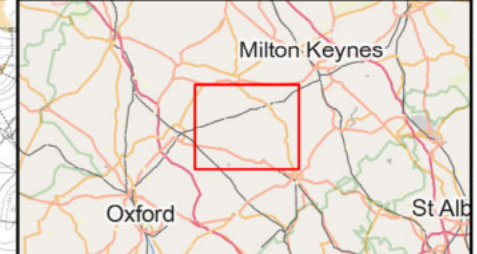
REV 01



- LEGEND:**
- Order Limits
 - Distance Radii from All Proposed Built Development (1-6km)
 - Viewpoints
 - Longbreach Solar Farm - Development area
 - Longbreach Solar Farm - Site Boundary



Coordinate System: British National Grid
 Projection: Transverse Mercator
 Datum: OSGB 1936
 Units: Meter



| Rev | Date | Description | Drn | Chk | App |
|-----|-----------|----------------|-----|-----|-----|
| 01 | SEPT 2025 | DCO SUBMISSION | MP | DL | JL |
| 00 | APR 2025 | First Draft | MP | DL | JL |

Rosefield Solar Farm

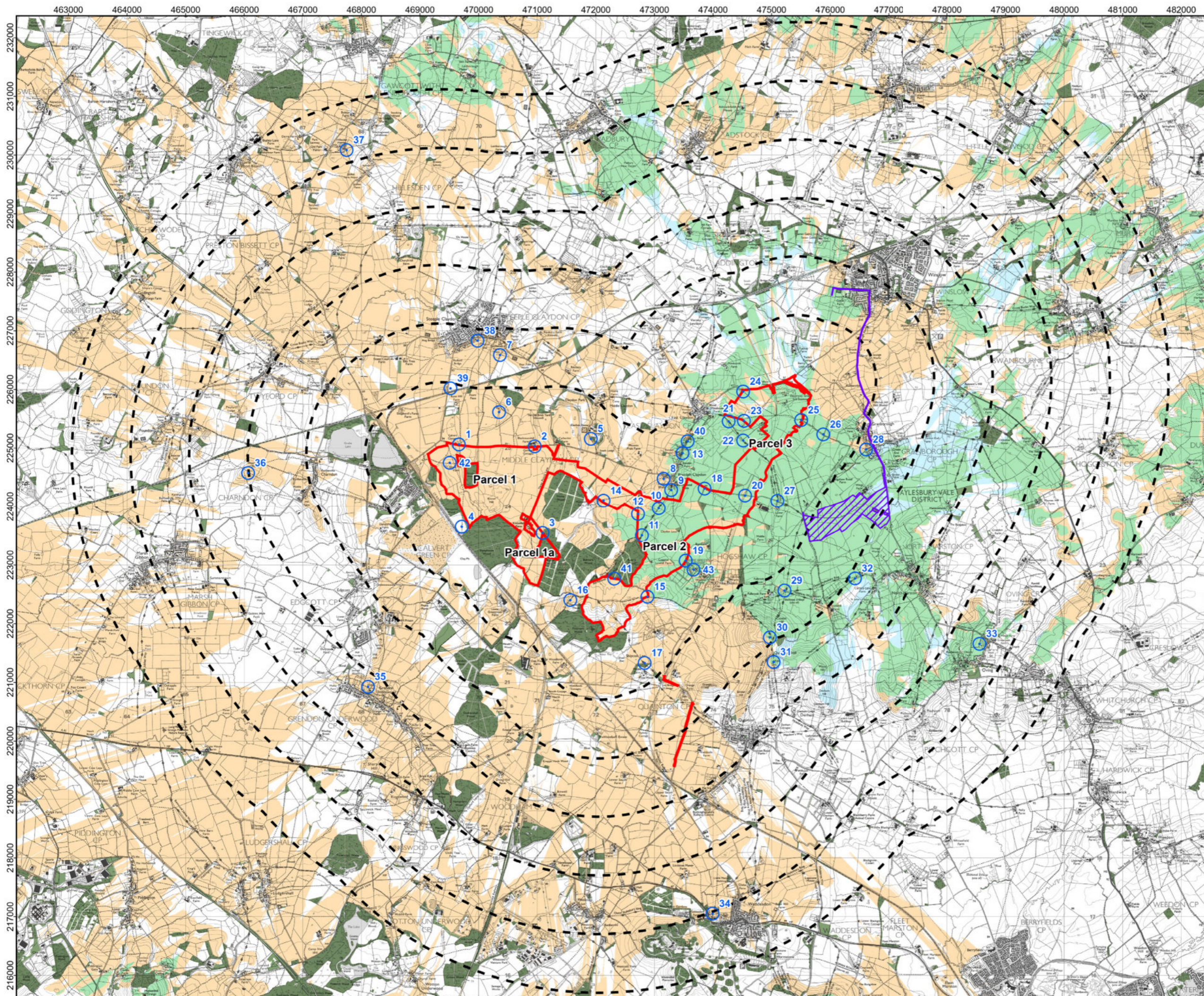
DOCUMENT:
 ENVIRONMENTAL STATEMENT
 VOLUME 3: FIGURES
 REGULATION 5(2)(a)

TITLE:
 FIGURE 17.6a
 CUMULATIVE ZTV - LONGBREACH SOLAR FARM -
 BARE EARTH

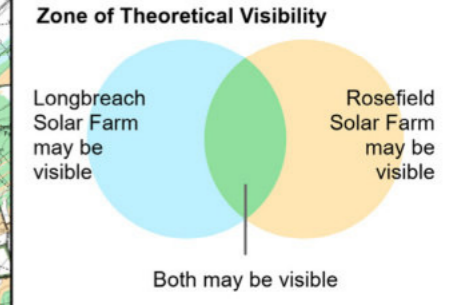
PINS REFERENCE NUMBER:
 EN010158/APP/6.3

Scale: 1:61,000 @ A3

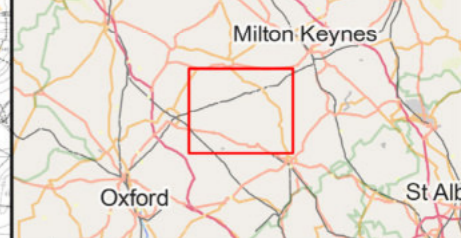
REV 01



- LEGEND:**
- Order Limits
 - Distance Radii from All Proposed Built Development (1-6km)
 - Viewpoints
 - Longbreach Solar Farm - Development area
 - Longbreach Solar Farm - Site Boundary
 - Buildings (modelled at 6m)
 - Woodland (modelled at 10m)



Coordinate System: British National Grid
 Projection: Transverse Mercator
 Datum: OSGB 1936
 Units: Meter



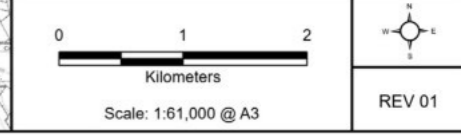
| Rev | Date | Description | Drn | Chk | App |
|-----|-----------|----------------|-----|-----|-----|
| 01 | SEPT 2025 | DCO SUBMISSION | MP | DL | JL |
| 00 | APR 2025 | First Draft | MP | DL | JL |

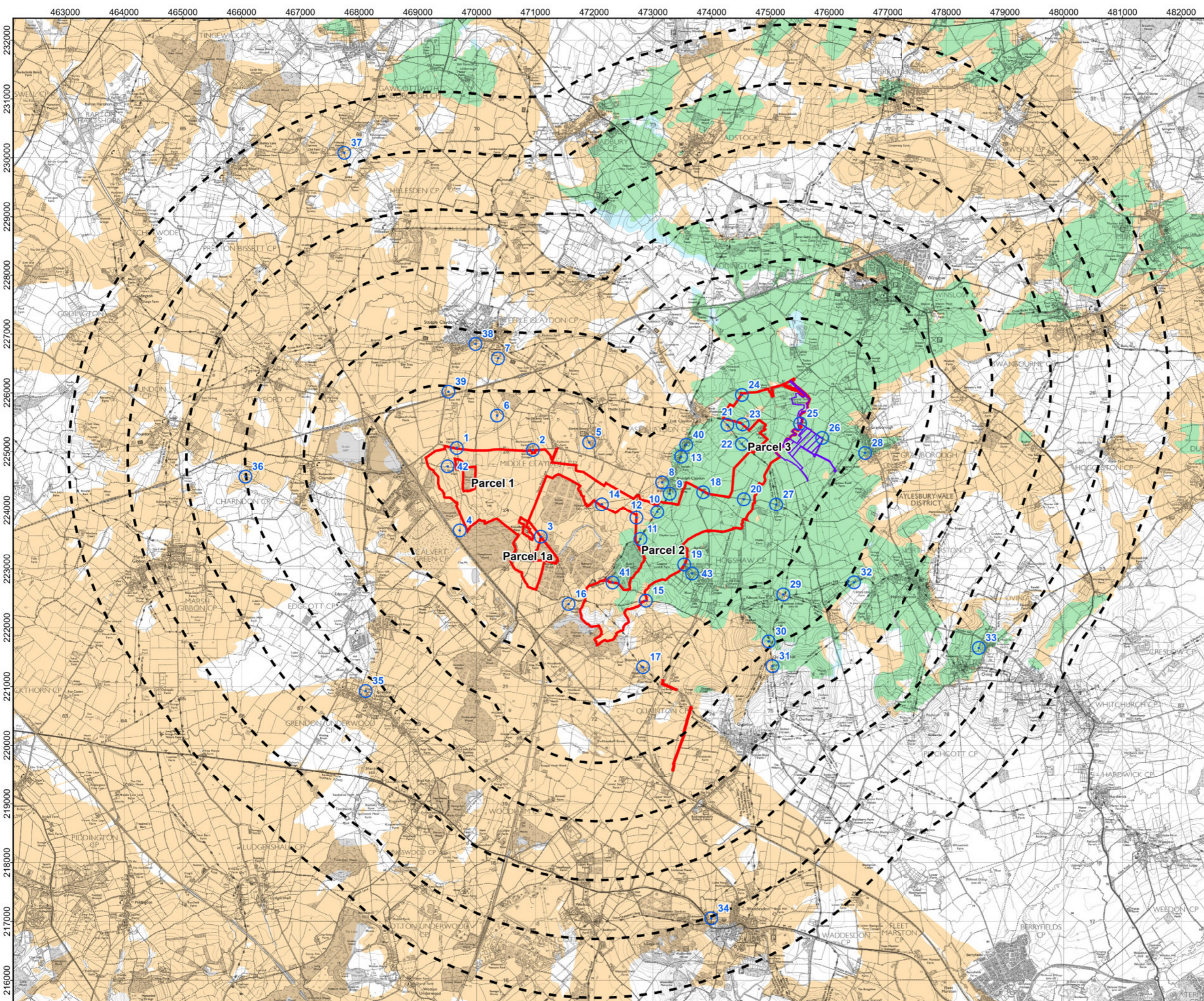
Rosefield Solar Farm

DOCUMENT:
 ENVIRONMENTAL STATEMENT
 VOLUME 3: FIGURES
 REGULATION 5(2)(a)

TITLE:
 FIGURE 17.6b
 CUMULATIVE ZTV - LONGBREACH SOLAR FARM -
 SCREENING

PINS REFERENCE NUMBER:
 EN010158/APP/6.3





LEGEND:

- Order Limits
- Distance Radii from All Proposed Built Development (1-6km)
- Viewpoints
- East Claydon BESS - Site Boundary
- East Claydon BESS - Development Area

Zone of Theoretical Visibility

East Claydon BESS may be visible

Rosefield Solar Farm may be visible

Both may be visible

Coordinate System: British National Grid
 Projection: Transverse Mercator
 Datum: OSGB 1936
 Units: Meter



| Rev | Date | Description | Drn | Chk | App |
|-----|-----------|----------------|-----|-----|-----|
| 01 | SEPT 2025 | DCO SUBMISSION | MP | DL | JL |
| 00 | APR 2025 | First Draft | MP | DL | JL |

Rosefield Solar Farm

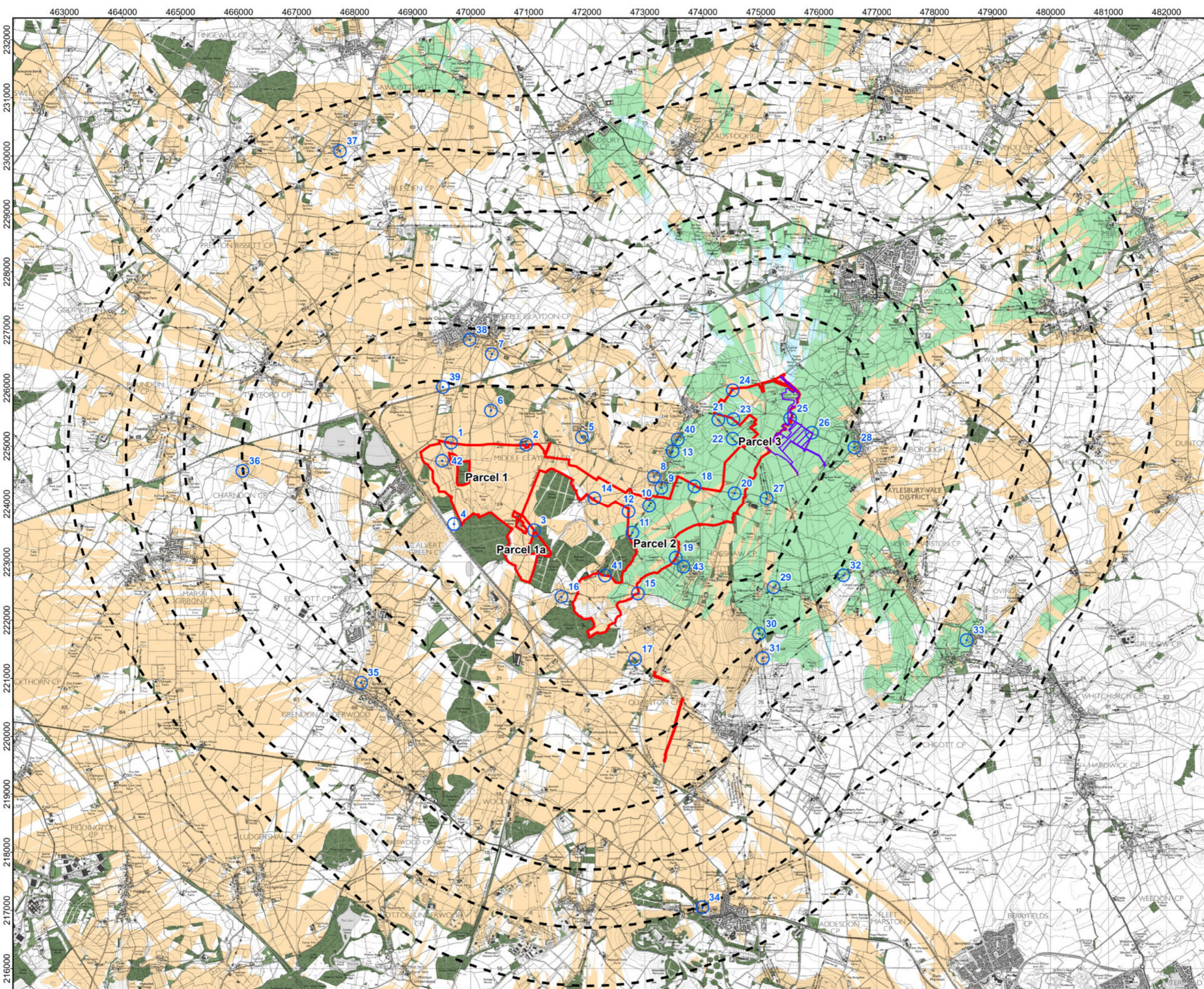
DOCUMENT:
 ENVIRONMENTAL STATEMENT
 VOLUME 3: FIGURES
 REGULATION 5(2)(a)

TITLE:
 FIGURE 17.7a
 CUMULATIVE ZTV - EAST CLAYDON BESS - BARE EARTH

PINS REFERENCE NUMBER:
 EN010158/APP/6.3

Scale: 1:61,000 @ A3

REV 01



LEGEND:

- Order Limits
- Distance Radii from All Proposed Built Development (1-6km)
- Viewpoints
- Woodland (modelled at 10m)
- Buildings (modelled at 6m)
- East Claydon BESS - Site Boundary
- East Claydon BESS - Development Area

Zone of Theoretical Visibility

East Claydon BESS may be visible

Rosefield Solar Farm may be visible

Both may be visible

Coordinate System: British National Grid
 Projection: Transverse Mercator
 Datum: OSGB 1936
 Units: Meter



| Rev | Date | Description | Drn | Chk | App |
|-----|-----------|----------------|-----|-----|-----|
| 01 | SEPT 2025 | DCO SUBMISSION | MP | DL | JL |
| 00 | APR 2025 | First Draft | MP | DL | JL |

Rosefield Solar Farm

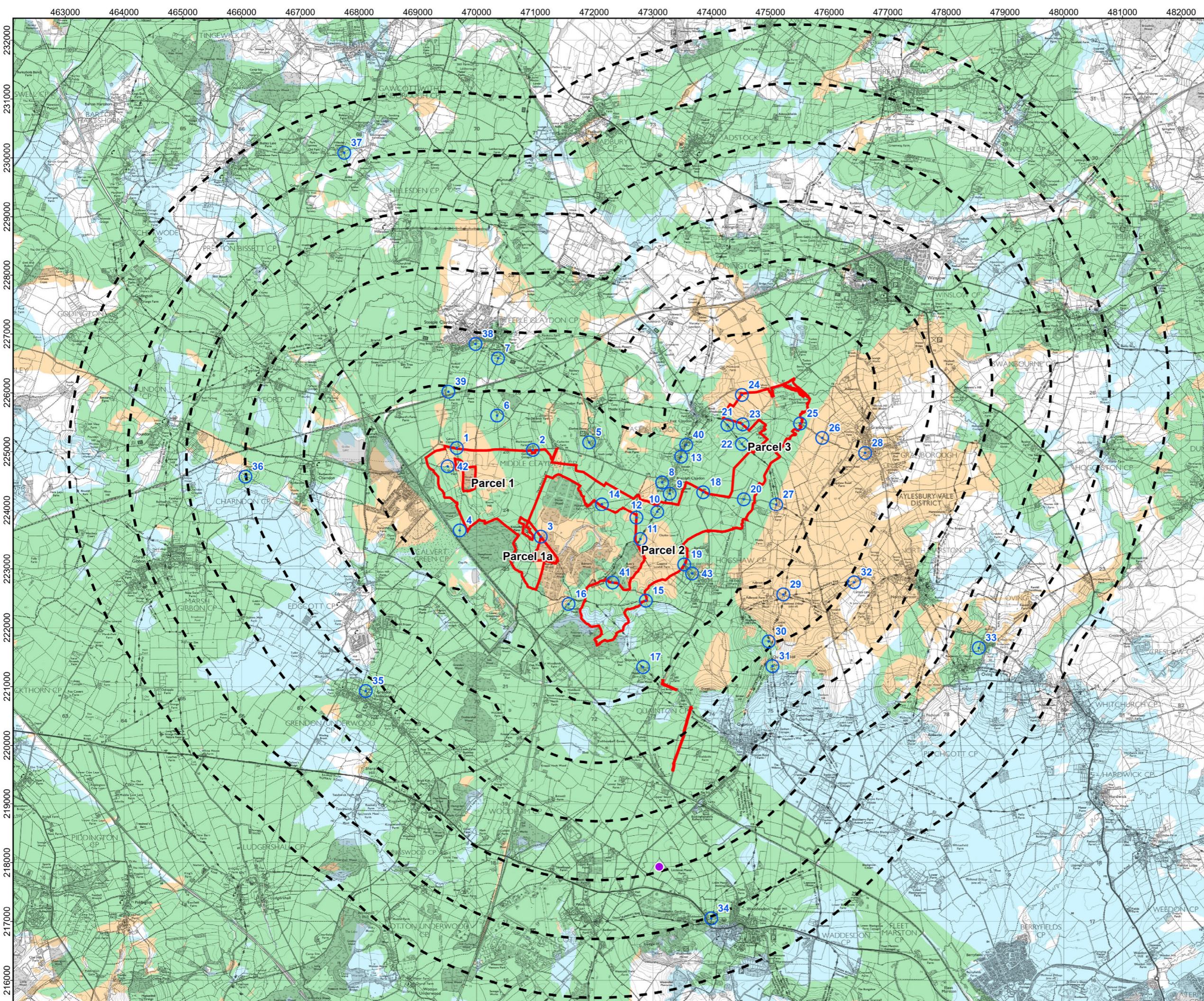
DOCUMENT:
 ENVIRONMENTAL STATEMENT
 VOLUME 3: FIGURES
 REGULATION 5(2)(a)

TITLE:
 FIGURE 17.7b
 CUMULATIVE ZTV - EAST CLAYDON BESS -
 SCREENING

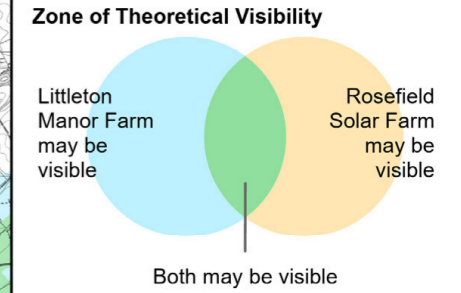
PINS REFERENCE NUMBER:
 EN010158/APP/6.3

Scale: 1:61,000 @ A3

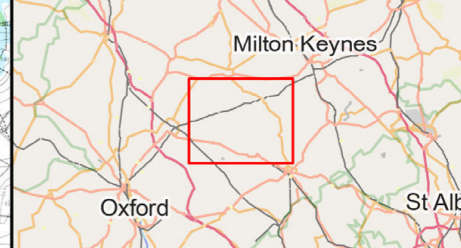
REV 01



- LEGEND:**
- Order Limits
 - Distance Radii from All Proposed Built Development (1-6km)
 - Viewpoints
 - Littleton Manor Farm Wind Turbine



Coordinate System: British National Grid
 Projection: Transverse Mercator
 Datum: OSGB 1936
 Units: Meter



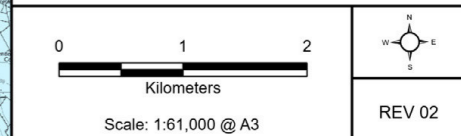
| Rev | Date | Description | Drn | Chk | App |
|-----|-----------|----------------|-----|-----|-----|
| 02 | MAR 2026 | DEADLINE 1 | RSK | RSK | EDF |
| 01 | SEPT 2025 | DCO SUBMISSION | MP | DL | JL |
| 00 | APR 2025 | First Draft | MP | DL | JL |

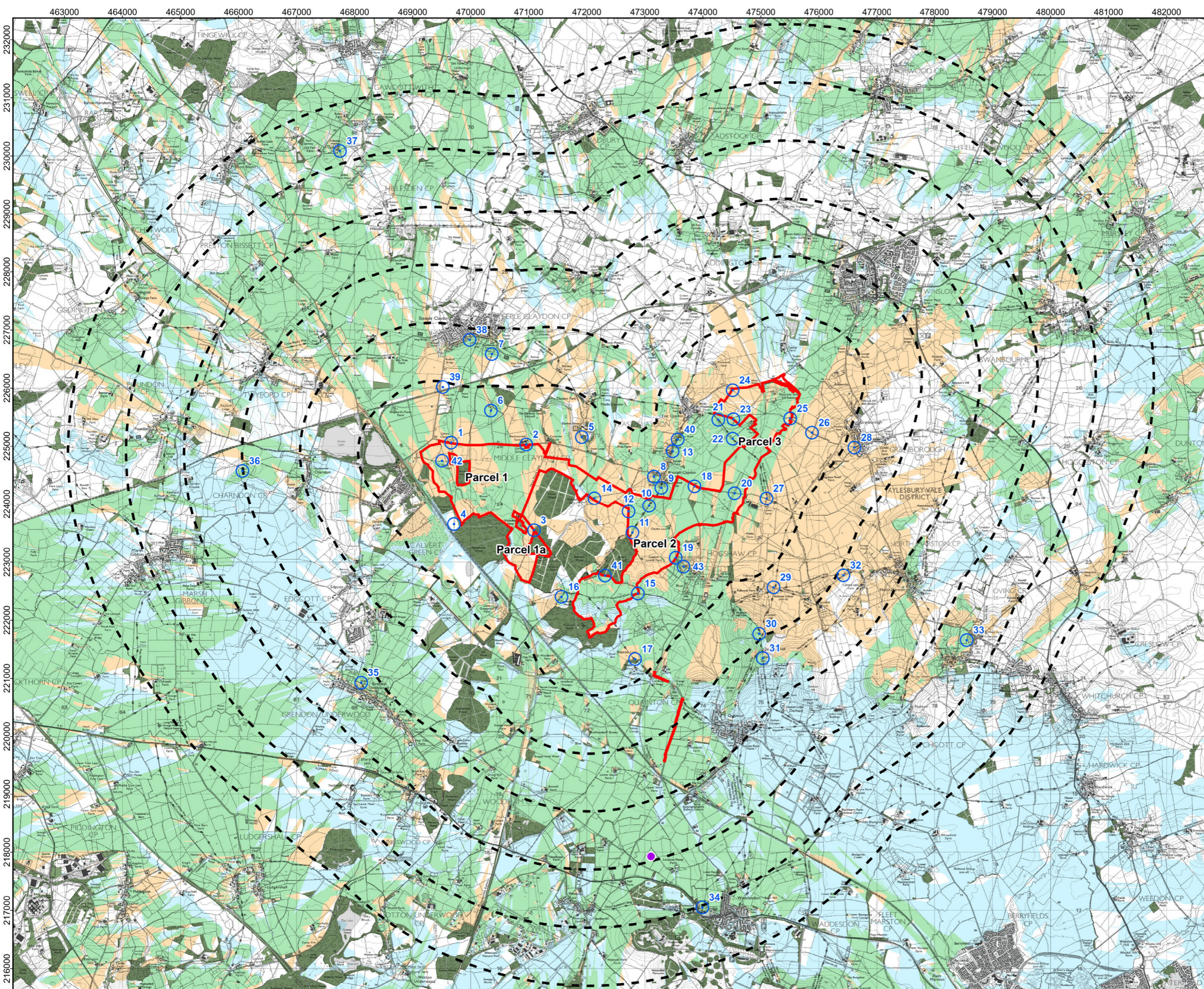


DOCUMENT:
 ENVIRONMENTAL STATEMENT
 VOLUME 3: FIGURES
 REGULATION 5(2)(a)

TITLE:
 FIGURE 17.8a
 CUMULATIVE ZTV - LITTLETON MANOR FARM -
 BARE EARTH

PINS REFERENCE NUMBER:
 EN010158/APP/6.3.2





LEGEND:

- Order Limits
- Distance Radii from All Proposed Built Development (1-6km)
- Viewpoints
- Woodland (modelled at 10m)
- Buildings (modelled at 6m)
- Littleton Manor Farm Wind Turbine

Zone of Theoretical Visibility

●
 Littleton Manor Farm may be visible

●
 Rosefield Solar Farm may be visible

Both may be visible

Coordinate System: British National Grid
 Projection: Transverse Mercator
 Datum: OSGB 1936
 Units: Meter



| Rev | Date | Description | Drn | Chk | App |
|-----|-----------|----------------|-----|-----|-----|
| 02 | MAR 2026 | DEADLINE 1 | RSK | RSK | EDF |
| 01 | SEPT 2025 | DCO SUBMISSION | MP | DL | JL |
| 00 | APR 2025 | First Draft | MP | DL | JL |

Rosefield Solar Farm

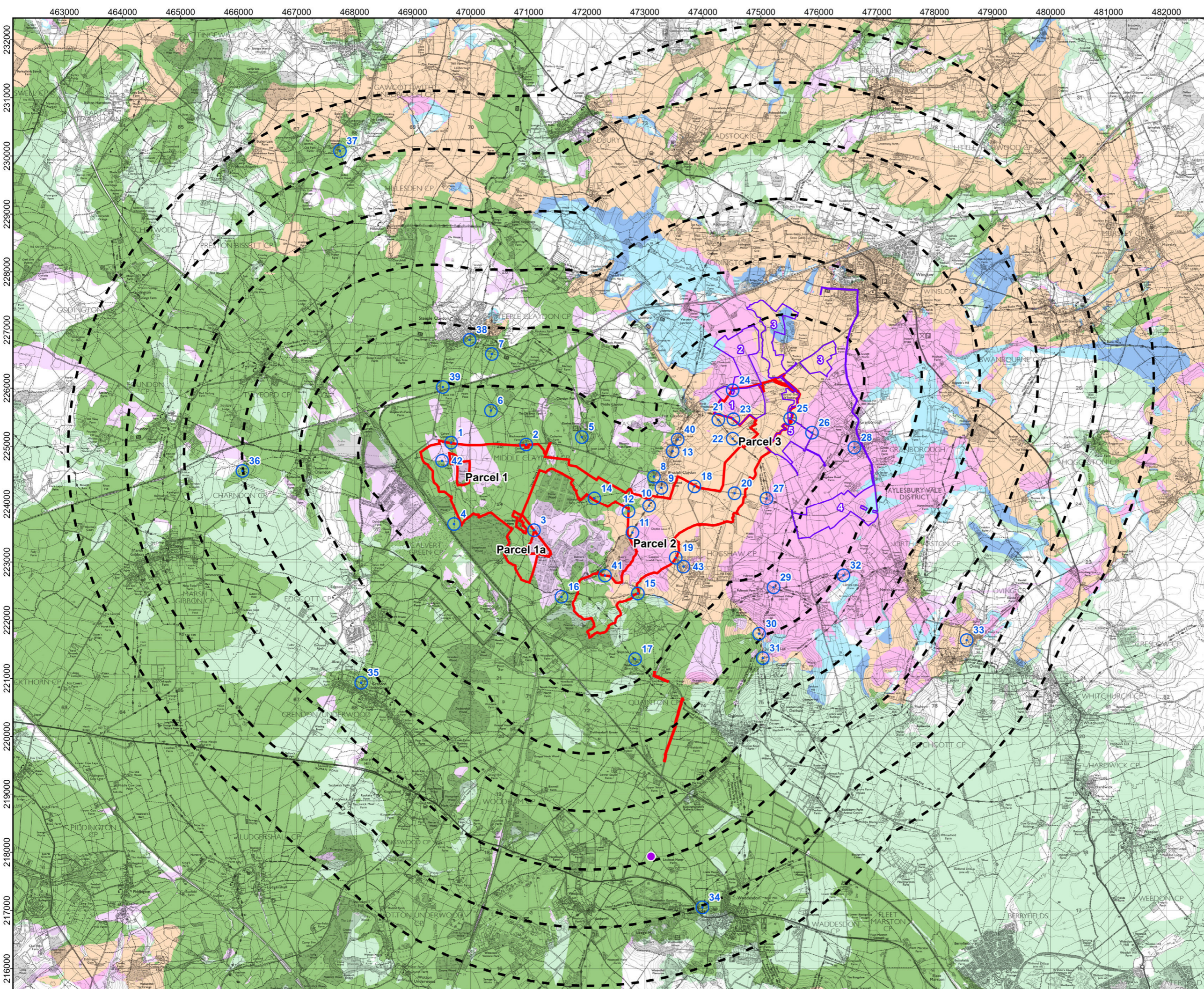
DOCUMENT:
 ENVIRONMENTAL STATEMENT
 VOLUME 3: FIGURES
 REGULATION 5(2)(a)

TITLE:
 FIGURE 17.8b
 CUMULATIVE ZTV - LITTLETON MANOR FARM -
 SCREENING

PINS REFERENCE NUMBER:
 EN010158/APP/6.3.2

Scale: 1:61,000 @ A3

REV 02



LEGEND:

- Order Limits
- Distance Radii from All Proposed Built Development (1-6km)
- Viewpoints
- Cumulative Sites - Boundaries
- 1 National Grid East Claydon Substation Extension
- 2 East Claydon Greener Grid Park
- 3 Tuckey Solar Farm
- 4 Longbreach Solar Farm
- 5 East Claydon BESS
- Littleton Manor Farm Wind Turbine

Zone of Theoretical Visibility

Any cumulative site (excluding Littleton Manor Farm wind turbine) may be visible

Rosefield may be visible

Littleton Manor Farm wind turbine may be visible

All may be visible

Coordinate System: British National Grid
 Projection: Transverse Mercator
 Datum: OSGB 1936
 Units: Meter



| 02 | MAR 2026 | DEADLINE 1 | RSK | RSK | EDF |
|-----|-----------|----------------|-----|-----|-----|
| 01 | SEPT 2025 | DCO SUBMISSION | MP | DL | JL |
| 00 | APR 2025 | First Draft | MP | DL | JL |
| Rev | Date | Description | Drn | Chk | App |

Rosefield Solar Farm

DOCUMENT:
 ENVIRONMENTAL STATEMENT
 VOLUME 3: FIGURES
 REGULATION 5(2)(a)

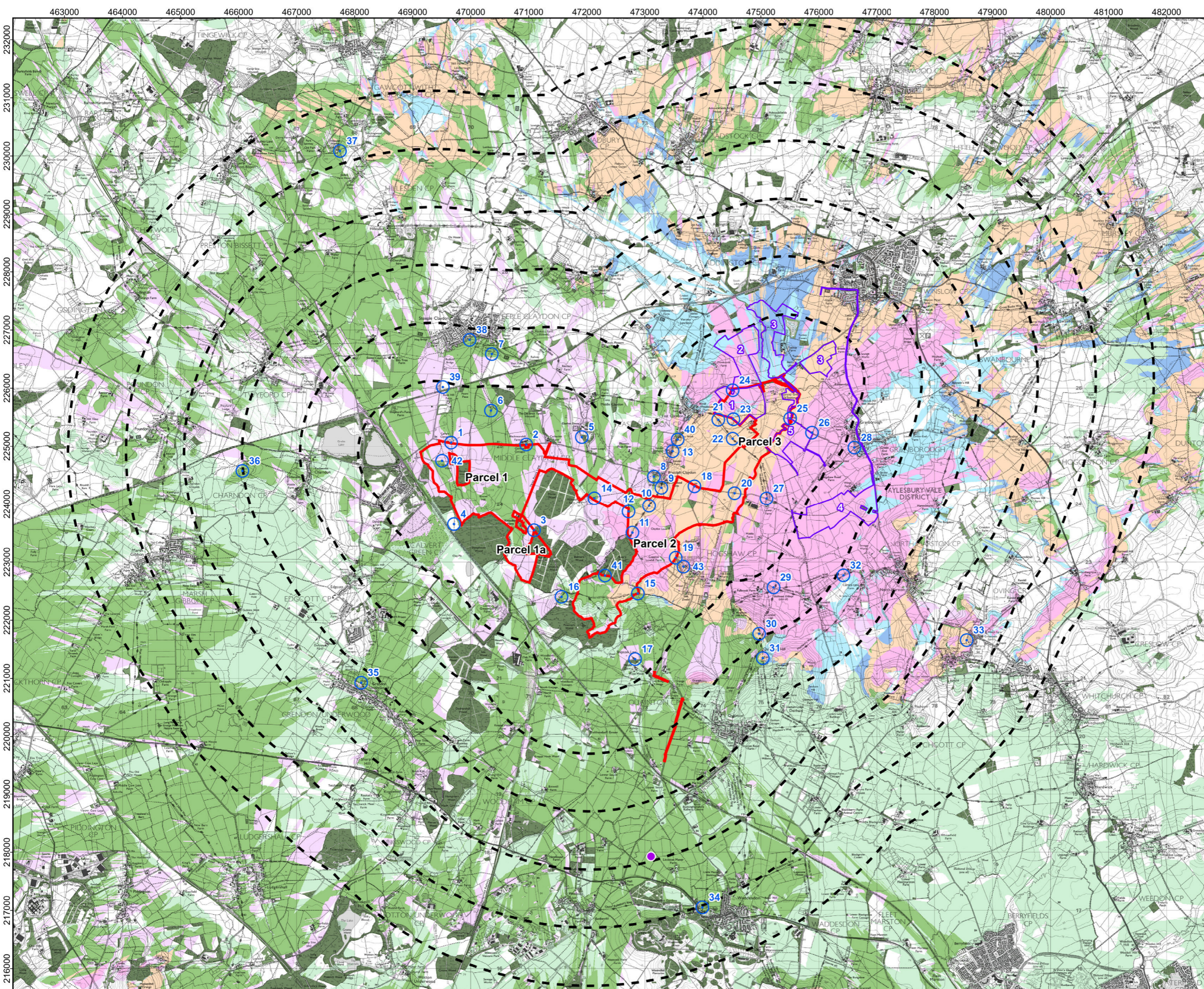
TITLE:
 FIGURE 17.9a
 CUMULATIVE ZTV - ALL CUMULATIVE SITES -
 BARE EARTH

PINS REFERENCE NUMBER:
 EN010158/APP/6.3.2

Kilometers

Scale: 1:61,000 @ A3

REV 02



LEGEND:

- Order Limits
- Distance Radii from All Proposed Built Development (1-6km)
- Viewpoints
- Woodland (modelled at 10m)
- Buildings (modelled at 6m)
- Cumulative Sites - Boundaries

- 1 National Grid East Claydon Substation Extension
- 2 East Claydon Greener Grid Park
- 3 Tuckey Solar Farm
- 4 Longbreach Solar Farm
- 5 East Claydon BESS
- Littleton Manor Farm Wind Turbine

Zone of Theoretical Visibility
Any cumulative site (excluding Littleton Manor Farm wind turbine) may be visible

Rosefield may be visible Littleton Manor Farm wind turbine may be visible

All may be visible

Coordinate System: British National Grid
Projection: Transverse Mercator
Datum: OSGB 1936
Units: Meter



| 02 | MAR 2026 | DEADLINE 1 | RSK | RSK | EDF |
|-----|-----------|----------------|-----|-----|-----|
| 01 | SEPT 2025 | DCO SUBMISSION | MP | DL | JL |
| 00 | APR 2025 | First Draft | MP | DL | JL |
| Rev | Date | Description | Drn | Chk | App |

Rosefield Solar Farm

DOCUMENT:
ENVIRONMENTAL STATEMENT
VOLUME 3: FIGURES
REGULATION 5(2)(a)

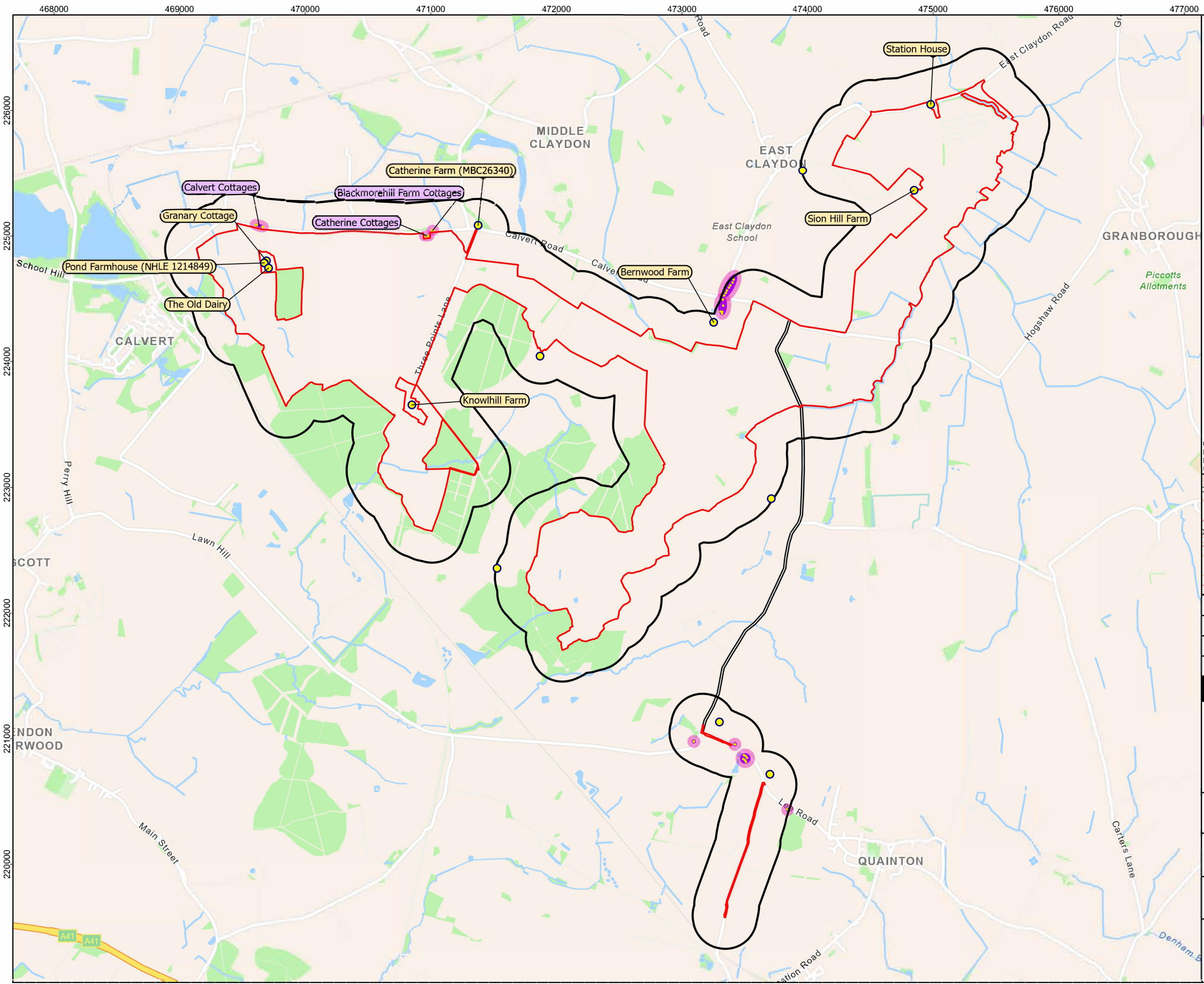
TITLE:
FIGURE 17.9b
CUMULATIVE ZTV - ALL CUMULATIVE SITES -
SCREENING

PINS REFERENCE NUMBER:
EN010158/APP/6.3.2

Kilometers

Scale: 1:61,000 @ A3

REV 02



- LEGEND:**
- Order Limits
 - 250 m buffer
 - Property
 - Claydon Road
 - Multiple Properties

Coordinate System: British National Grid
 Projection: Transverse Mercator
 Datum: OSGB 1936
 Units: Meter



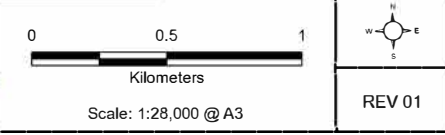
| Rev | Date | Description | Drn | Chk | App |
|-----|----------|-------------|-----|-----|-----|
| 01 | Apr 2026 | Deadline 2 | RSK | RSK | EDF |

Rosefield Solar Farm

DOCUMENT:
 ENVIRONMENTAL STATEMENT, VOLUME 3:
 FIGURES, REGULATION 5(2)(a)

TITLE:
 FIGURE 17.10 - Residential Properties within 250m of the
 Order Limits excluding Finmerehill House, Dry Leys
 Farmhouse and Muxwell Farm

PINS REFERENCE NUMBER:
 EN010158/APP/6.3.3



Sources: Esri, TomTom, Garmin, FAO, NOAA, USGS, © OpenStreetMap contributors, and the GIS User Community, Map data © OpenStreetMap contributors, Microsoft, Facebook, Google, Esri Community Maps contributors, Map layer by Esri

